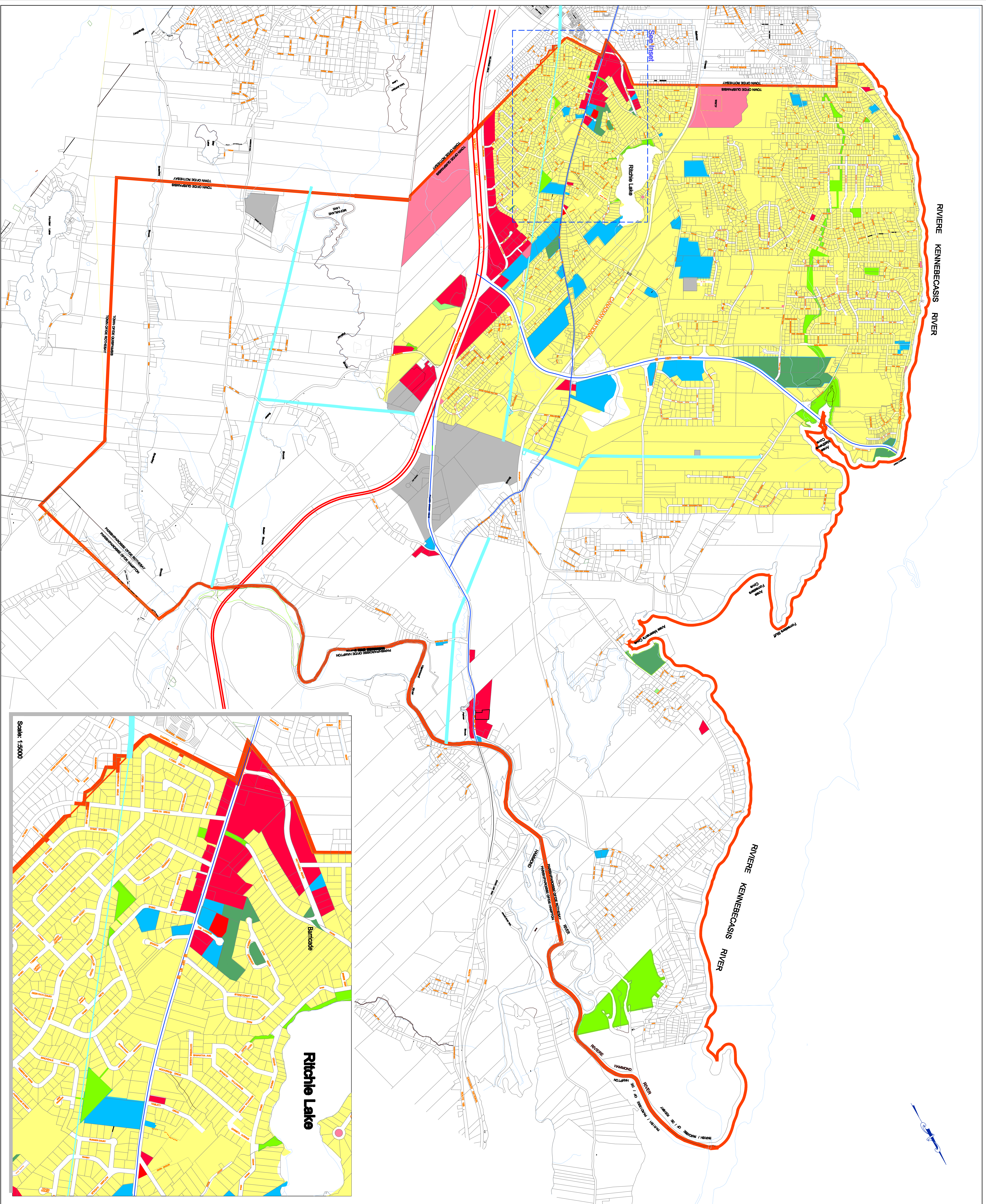


# Municipal Plan

## By-Law # 037



Town of Quispamsis



**Legend:**

- Highway
- Arterial Road
- Local Numbered Road
- Other Local Road
- Municipal Street
- Wood/Farm Road
- Town Boundary Line
- Transmission Line
- Property Line
- Wet Area
- River/Stream
- Walking Bridge


**Future Land Use:**

- Residential**
- Residential
- Commercial**
- Commercial
- Industrial**
- Industrial
- Water/Server Facilities**
- Water/Server Facilities
- Proposed Connecting Street**
- Proposed Connecting Street
- Recreational**
- Park/Sportsfield
- Open Space
- Institutional**
- Institutional
- Rural**
- Rural
- wooded
- clear
- Vacant / Rural

**NOTE: THIS DRAWING IS NOT A LEGAL SURVEY AND IS USED FOR ILLUSTRATIVE PURPOSES ONLY.**

**Drawing Title:**  
**Future Land Use Map**  
**SCHEDULE "B"**

**Project Title:**  
**Town of Quispamsis**  
**Municipal Plan**



<b>Scale:</b> 1 : 12500	<b>Project:</b> TE51076
<b>Date:</b> January 16, 2007	<b>Drawn By:</b> JEM
<b>Revision:</b>	<b>Drawn By:</b> JEM
<b>Source:</b> Atlantic A&E RGA CONSULTANTS LTD. Project No. 99-698-02, Dwg No. 698-02-02-G, September 23, 1999.	<b>Property Fabric:</b> Service New Brunswick April 2006