

**Town of Quispamsis, New Brunswick**  
**Draft Report - October 2015**

# **SPORTS FIELD ANALYSIS**

# DRAFT







# Acknowledgements

Viridis Design Studio would like to thank the many stakeholder participants, various organizations and individuals that provided input and feedback during the project.

Our team also wishes to thank the staff members of the Town of Quispamsis in their assistance and dedication to the project. Special thanks to Dana Purton Dickson, Barry Brown and Dwight Colbourne.

## *Consulting Team*

*This report was prepared by Viridis Design Studio Ltd. and Upland Urban Planning + Design Studio, October 2015.*





# Table of Contents

## Executive Summary

1	Introduction	6	4	Recommendations	34
	About Quispamsis	7		Recommendations	34
	Quispamsis Sports Fields	7		Implementation Strategy	35
	Document Sections	8		Summary	37
2	Background	9	5	Hampton Road Site	38
	Demographic Profile	9		Concept Scenarios	40
	Sports Trends	12		Appendices	43
	Current Participation	14		Consultation Data	44
	Field Inventory	15		References	47
	Field Usage	20		Survey	47
	Municipal Policy	21		Cost Estimates	52
	Facility Standards	22			
3	Consultation	25			
	Openhouse	25			
	Survey	25			
	User Group Contacts	25			
	Neighbouring Community Contacts	25			
	What We Heard	26			







# Executive Summary

The Town of Quispamsis has an active sports community that has experienced growth in the years since the last field infrastructure was put in place. Recognizing this growth, and as a forward thinking community, Quispamsis engaged a consulting team to undertake an inventory analysis of the existing sports fields that examines the needs of the current field users while planning for the future.

## PROJECT MANDATE

The main objectives of this study included:

- Inventory the current fields within the Town of Quispamsis and neighbouring communities.
- Engage the public, current field user groups, potential user groups, neighbouring communities and Town staff.
- Provide recommendations and an implementation strategy for the sports fields in Quispamsis.

- If required based on background information, develop a concept plan for a future sports field(s) location based on the recommendations at the Hampton Road site.

## ANALYSIS

The neighbouring communities of Hampton, Rothesay and Saint John were consulted as part of the analysis to provide a regional picture.

## CONSULTATION

The various user groups, and the community as a whole, were invited to participate in this project providing valuable information. Current user groups were contacted individually for their input, surveys were made available to the public at an openhouse session and online as well as to user groups.

## RECOMMENDATIONS

A series of recommendations have been identified based on current trends, projected population and existing resources.

## PURPOSE STATEMENT

*The purpose of this sports field analysis was to:*

- ***Review demographics, trends and inventory sports field supply analysis.***
- ***Engagement/Consult with users and public.***
- ***Based on results develop recommendations and potentially a concept for the Hampton Road Site.***

The following report has been prepared and delivered to the Town of Quispamsis. It is important to note that sports will continue to have shifting trends as will the municipal demographics. This study has taken these factors into account, however recreation needs should be revisited with each municipal plan review to ensure needs are being managed and as part of a recreation master plan.





Figure 1. Quispamsis in New Brunswick

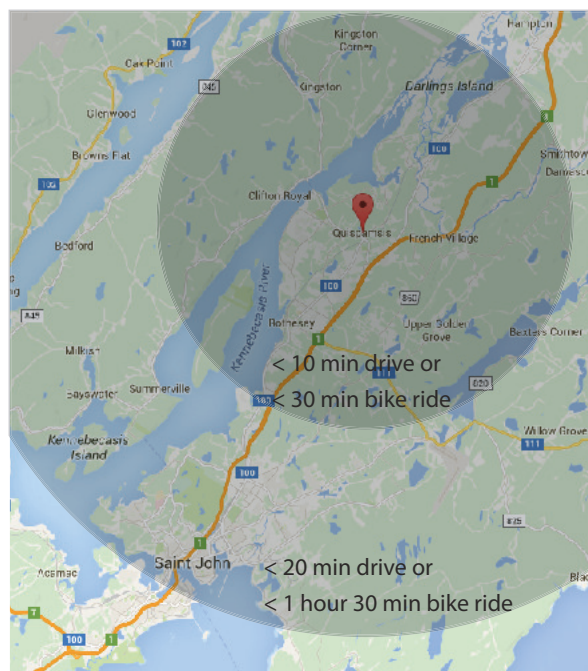


Figure 2. Quispamsis in Kennebec Valley



# 1 Introduction

## About Quispamsis

Nestled in the Kennebecasis Valley, Quispamsis is an evolving and growing community. Quispamsis is in close proximity to the City of Saint John and next door to the towns of Rothesay and Hampton.

The 2011 Census indicated a population of 17,972 and as identified in the Quispamsis Demographics Report completed in July 2015 by the Town of Quispamsis, the current (2015) population is estimated to be 19,543. The Town has a high percentage of families with young children and according to the same report, the largest group within the community is between the ages of 5-19, making up 21% percent of the Town's population.

## Quispamsis Sports Fields

The residents of Quispamsis are passionate about field sports whether soccer, baseball, softball, track and field, etc..

The Town sports fields are of major significance to the youth and adult programs alike. Within the town there are four ball diamonds, two soccer fields and 1 track that are town owned, operated and maintained by the Town of Quispamsis. This inventory includes only Town of Quispamsis recreation fields and does not take into consideration fields located on school properties.



## Document Sections

### INTRODUCTION

The introduction to this report provides initial information about the Town of Quispamsis and describes the document structure.

### BACKGROUND

This section introduces the current and projected needs for sports fields in Quispamsis, based on population, demographics, research, trends and consultation with stakeholders and the community. Also highlighted in this section of the report are the methods of public consultation that were delivered, and a summary of the input obtained.

### INVENTORY

Outlined in this section is an inventory of the sports fields currently available in Quispamsis and the neighbouring communities of Hampton, Rothesay and Saint John. Maps for each of the communities identify the facilities.

### RECOMMENDATIONS

Recommendations for the existing fields and proposed future sports field implementation are identified in this section of the report.

An implementation strategy is proposed based on the recommendations outlined.

### APPENDICES

The appendices include raw data from consultations, and sources for further information.

- A. Consultation Data
- B. References
- C. Stakeholders Consulted



# 2 Background

## Demographic Profile

### POPULATION

Quispamsis is a lower density, suburban community in Southwestern New Brunswick. The 2011 Census indicated a population of 17,886.

A recent demographics report completed in July 2015 indicates that the current population is estimated at 19,543 with a projected population of 21,167 for 2018 and anticipated growth would see a population of over 25,000 in ten years time.

As identified in the July 2015 Demographic Report, 21% of the population is 5-19 years old with the next two largest groups being age 35-44 and 45-54, both at 15% of the Town's population.

### EMPLOYMENT

Most of the Town's residents work in Saint John (Town of Quispamsis, 2006). Some employment is available in Quispamsis, particularly in retail, construction, education and town services.

### AGE

Quispamsis has a high population of young families.

17,886

(2011 Census)

19,543

2015 Demographic Snapshot,  
Demographic Report July 2, 2015

21,167

Projected Population 2018  
2015 Demographic Snapshot,  
Demographic Report July 2, 2015

25,000+

Projected Population 2025

% of Couples with Children < 24  
years at home (2011)

Quispamsis 54%

New Brunswick 41%

Canada 47%

775,000

750,000

725,000

700,000

675,000

-0.18%

stable

+2.90%

NA

2001

2006

2011

2015

## HISTORICAL POPULATION GROWTH

New Brunswick

## NEW BRUNSWICK POPULATION GROWTH

As of 2011, the confirmed population of New Brunswick was 751,171. There was minor drop in the population from 1996 to 2001, after which the population remained stable, and then rose again in 2011.

Source: Statistics Canada, 2011.

<http://www.statcan.gc.ca/tables-tableaux/sum-som/l01/cst01/demo62e-eng.htm>

25,000

20,000

15,000

10,000

2001

2006

2011

2015

+1.31%

+10.77%

+17.37%

+9.26%

## HISTORICAL POPULATION GROWTH

Quispamsis

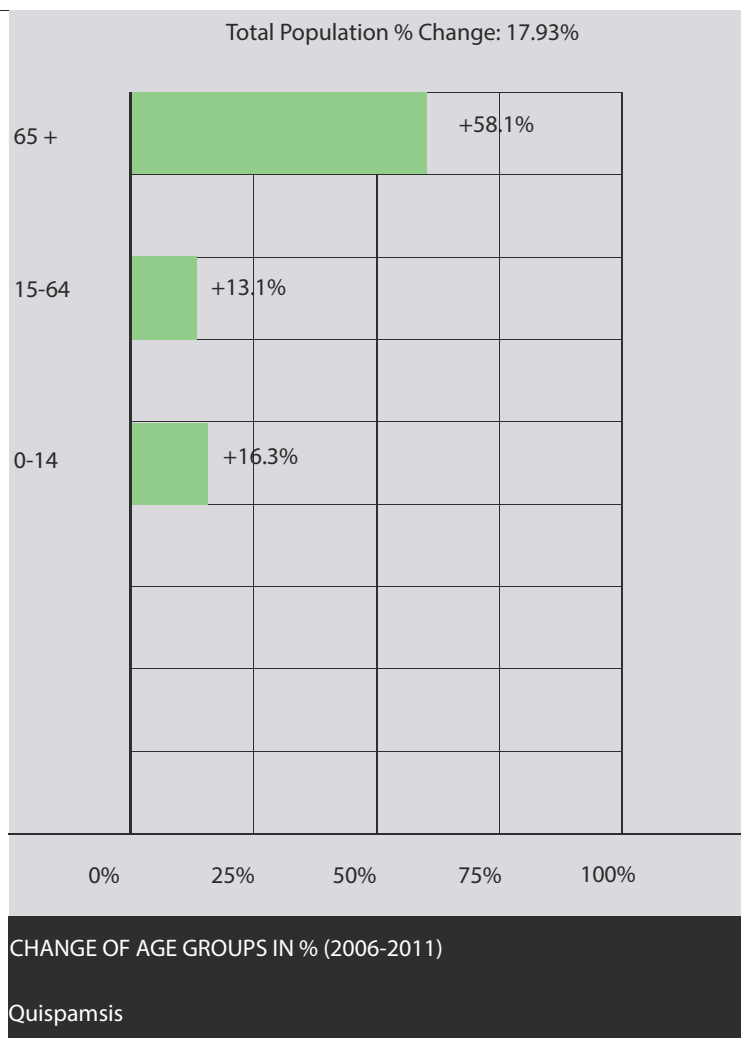
## QUISPAMISIS POPULATION GROWTH

In 2011, the population of Quispamsis was 17,886. This population has grown substantially over the past fifteen years. The most recent population estimate for Quispamsis is 19,543, which continues to show this pattern of growth.

Source: Statistics Canada, 2011

<http://www12.statcan.ca/census-recensement/2011/dp-pd/prof/details/page>.





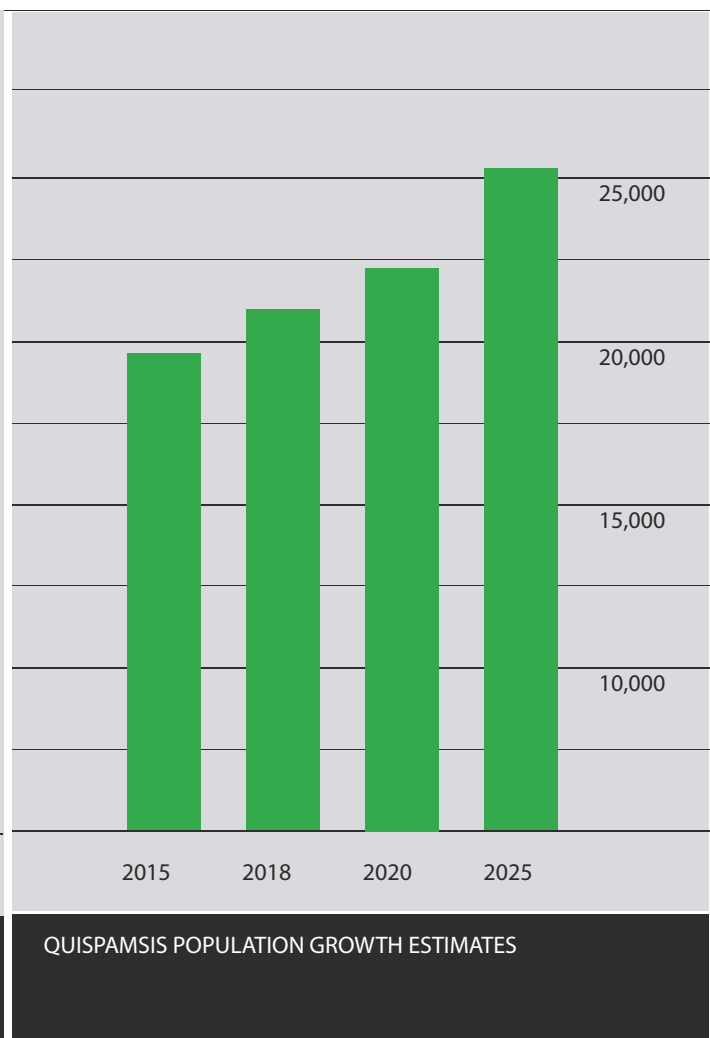
#### POPULATION GROWTH BY AGE

Between 2006 and 2011, the total population of Quispamsis grew by 17.93%. This growth, however, did not occur consistently amongst all age groups. Although younger age cohorts are growing in Quispamsis, they are growing at a significantly slower rate than more elderly age groups.

A factor that can explain this trend is the nation-wide trend of an aging population as a result of the post-war baby boom.

**Source:** Statistics Canada, 2011

<https://www12.statcan.gc.ca/census-recensement/2011/as-sa/fogs-spg/Facts-csd-eng.cfm?LANG=Eng&GK=CSD&GC=1305057>



#### ESTIMATED GROWTH

Based on an average growth rate of 0.84% (calculated over the past twenty years), Quispamsis' population is expected to grow to approximately 25,000+ by 2025.

Source: Quispamsis Demographics Report July 2, 2015

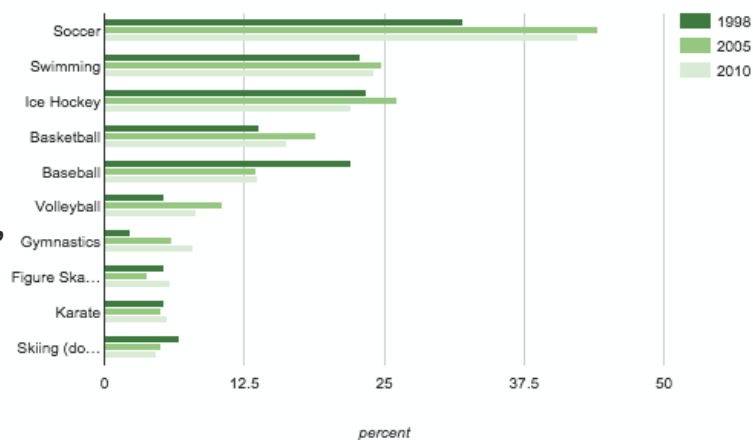
## Sports Trends

### CANADIAN SPORTS PARTICIPATION

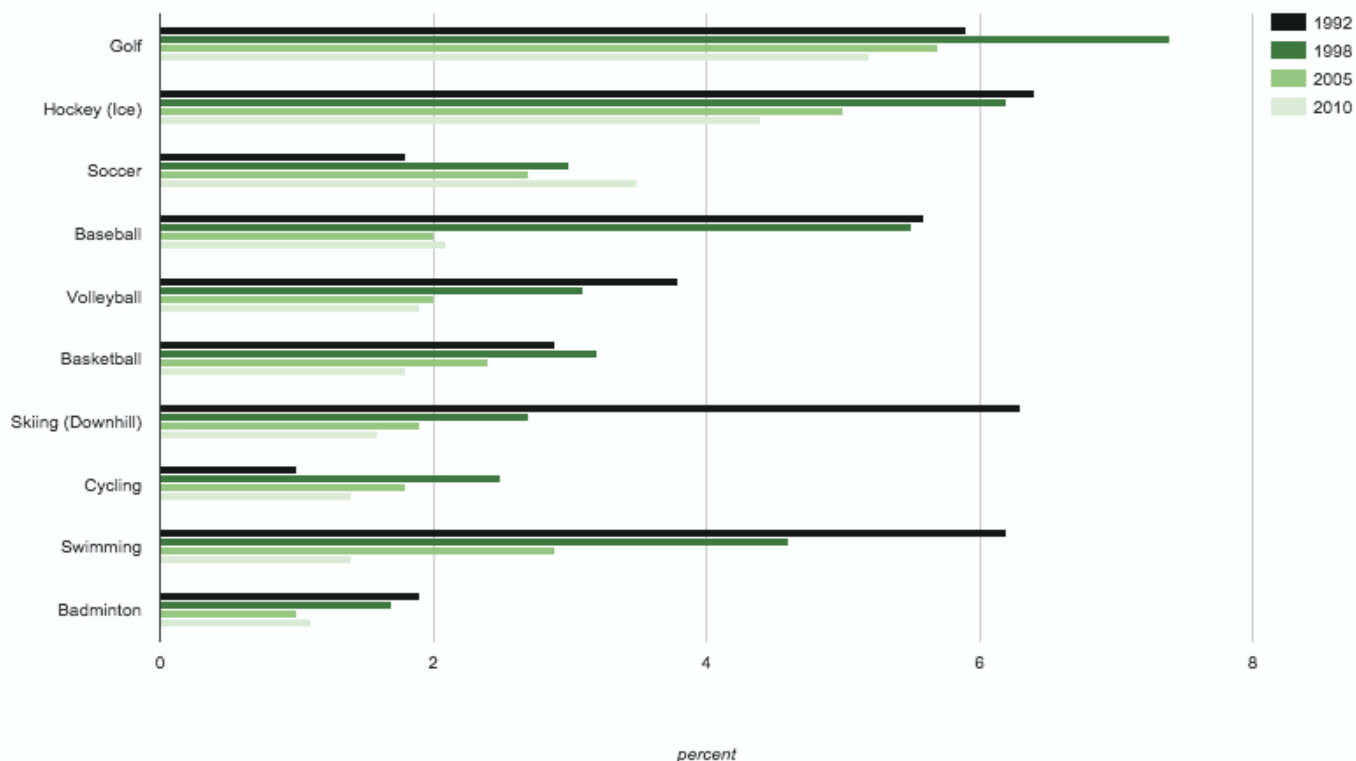
In Canada, rates of sports participation are higher:

- in towns of between 10,000 and 50,000 (Statistics Canada, 2008),
- for children < 15 (Canadian Heritage, 2013, p. 36), and
- for males (Statistics Canada, 2008).

#### Most Practiced Sports by Canadians age 5-14



#### Most Practiced Sports in Canada





Recent sports participation trends in Canada have included:

- **a decline in overall sports participation,**
- **increased participation by females,**
- **a rise in the popularity of soccer,**
- **declining popularity of hockey, tennis and baseball,**
- **increased participation in spontaneous and casual sports such as pick-up basketball, swimming and walking, and**
- **a rise in Rugby and Ultimate Frisbee participation.**

**These trends suggest that soccer fields should continue to be a high priority and that facilities should be flexible, to attract emerging sports, and both organized and casual uses.**

**Contrary to the national trends, Quispamsis is seeing an increase in softball participation. It is difficult to determine if this trend will continue.**

## QUISPAMSIS SPORTS PARTICIPATION

Based on a 2007 study of Quispamsis' sporting needs, the most popular sports for children that require fields are, in descending order, soccer, lacrosse and baseball (Town of Quispamsis, 2007).

## MULTI-PURPOSE FACILITIES

The development of facilities as part of complexes or "hubs" is increasingly seen as an effective and efficient use of community resources; it is recommended in the recreation plans of Hampton (2009) and Rothesay (2009).

## ENVIRONMENT

Canadians increasingly demand environmentally sensitive management of sports facilities. This can also include strong linkages with active transportation corridors, which are prioritized in Quispamsis' Active Transportation Plan (2011).

## SPORT TOURISM

Investment in sports facilities is increasingly seen as an opportunity for fostering sport tourism. Hosting national and international events can bring business to small communities. In order to attract these events, facilities must meet national and internal standards.

## Current Quispamsis Sports Participation

Based on a recent study of Quispamsis' sporting needs, the most popular sports and fitness activities in households are hockey, outdoor soccer, walking, swimming, and basketball in descending order (Town of Quispamsis, 2007).

The top 6 most popular sports for children are soccer, hockey, swimming, basketball, lacross and baseball. Of these, those that require fields are soccer, lacrosse and baseball (Town of Quispamsis, 2007).

Notably, contrary to national trends, Quispamsis is seeing an increase in the popularity of baseball and related sports. This is likely due to the presence of strong local advocacy for ball sports.

Quispamsis resident enrollment/participation in 2014 for the three primary field groups identified are as follows:

- **Minor Ball - 247**
- **Girls Softball - 293**
- **Fundy Soccer - 575**

These organizations are made up of residents of Quispamsis and neighbouring communities. When assessing the field needs of the Town of Quispamsis the number of resident participants has been used for this study.

Each community has a shared responsibility to provide fields and time slots to the various user groups proportionately to their enrollment numbers. This identifies the potential benefit of a

regional recreation strategy that works with recreation master plans of each community.

	2012	2013	2014
<b>Fundy Soccer</b>	n/a	561	575
KVMBA	267	267	247
KVSA	139	227	293
<b>Quispamsis Slow Pitch</b>	144	95	80
<b>GP Slow Pitch</b>	34	n/a	24
<b>KV Orthogox</b>	33	32	39
<b>SJ Church League</b>	37	n/a	25



## Field Inventory

Currently the region has a number of sports fields and diamonds, both municipal and other. The following provides a breakdown of the number of fields in Quispamsis, Saint John, Hampton and Rothesay.

### Field Supply

(includes all fields in each community)

#### **Quispamsis (including School Fields)**

6 soccer/football fields (1 turf/1 lights)

4 ball diamonds (1 lights)

#### **Saint John**

10 soccer/football (2 lights/2 turf)

4 ball diamonds (2 lights)

#### **Hampton**

4 soccer/football fields

3 ball diamonds

#### **Rothesay**

5 soccer/football fields (1 lights/2 turf)

Currently, the Town of Quispamsis does not maintain or schedule use of school fields therefore the number of fields for this study will be based on the Town owned and operated fields.

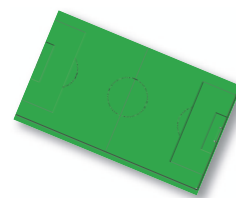
#### **Quispamsis (excluding school fields)** **2 soccer/football fields**

- **James Rolfe Soccer Field, Quispamsis Recreation Centre**
- **Saunders Field, Quispamsis Recreation Centre**

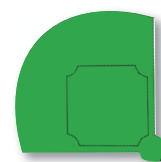
#### **4 ball diamonds (1 lights)**

- **Meenan's Cove**
- **Walter Jewett, Civic Centre Recreation Complex (lights)**
- **Memorial, Quispamsis Memorial Arena**
- **Centennial, Quispamsis Recreation Centre**

2x



4x



# 1

# QUISPAMSIS

## SPORTS FIELDS

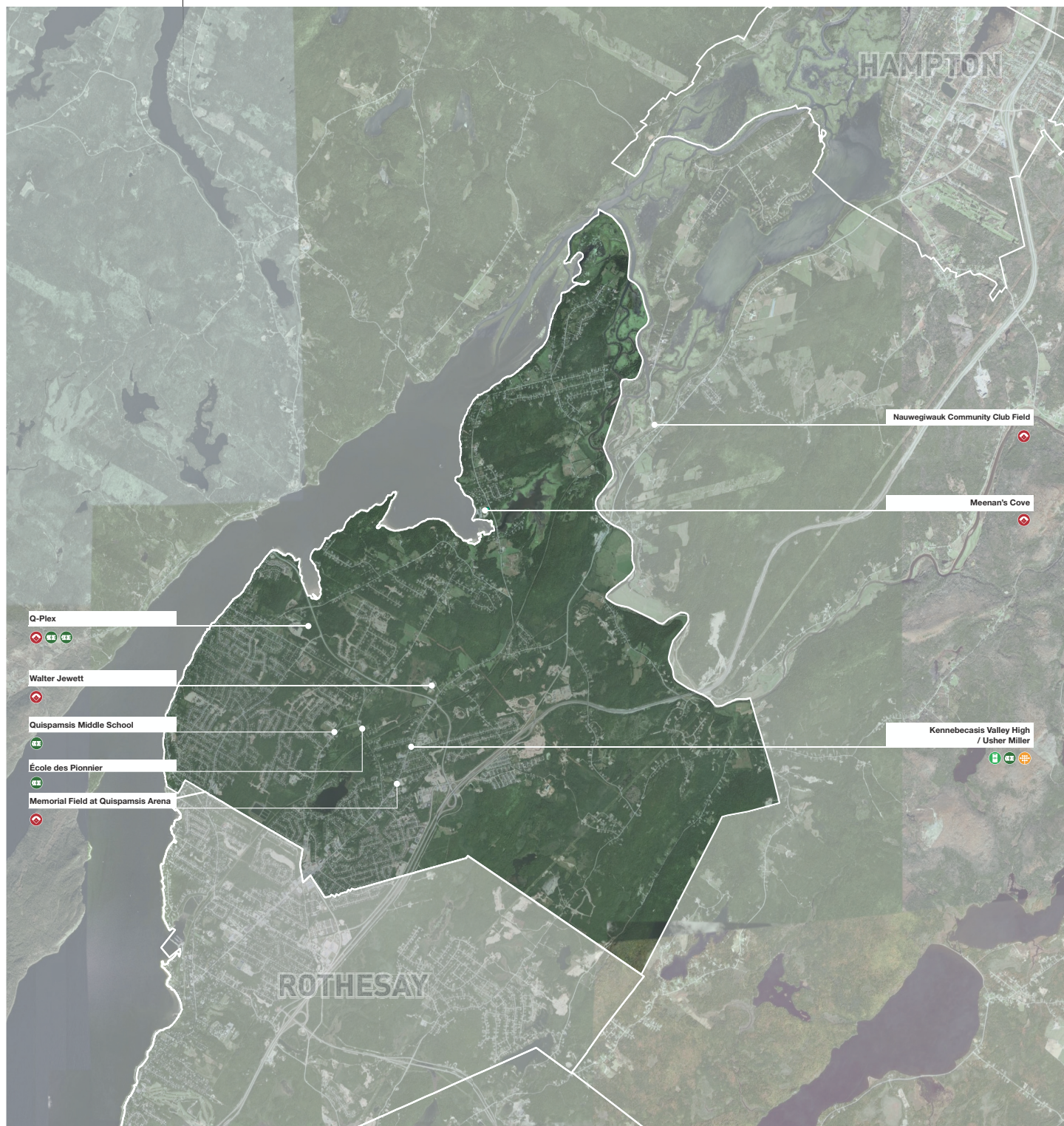
INTRODUCTION

BACKGROUND

CONSULTATION

RECOMMENDATIONS

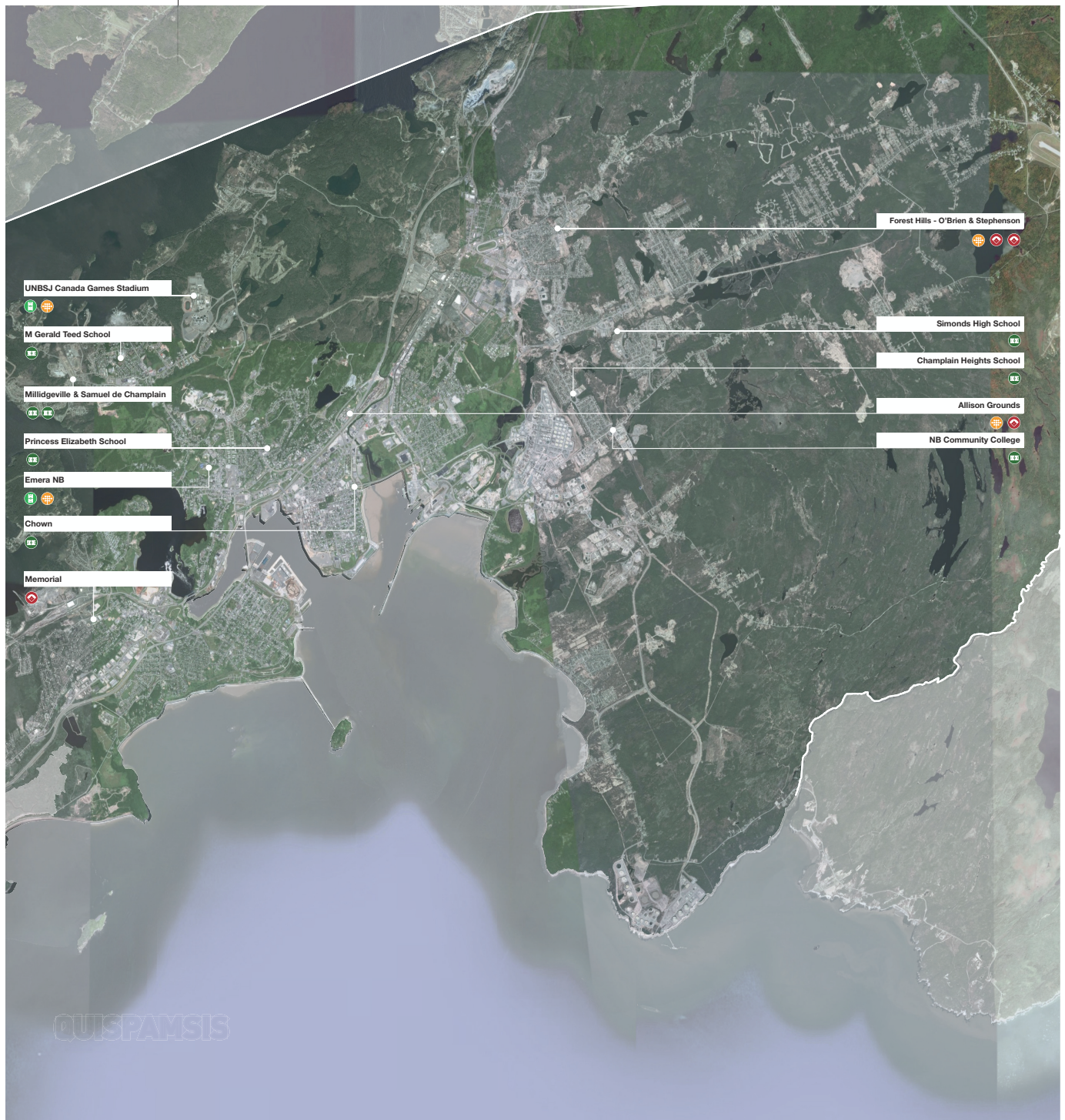
APPENDICES





# 2

## SAINT JOHN SPORTS FIELDS



### LEGEND

- BALL FIELD
- GRASS SPORTS FIELD
- TURF SPORTS FIELD
- LIGHTING AVAILABLE





# 3

## ROTHESAY SPORTS FIELDS

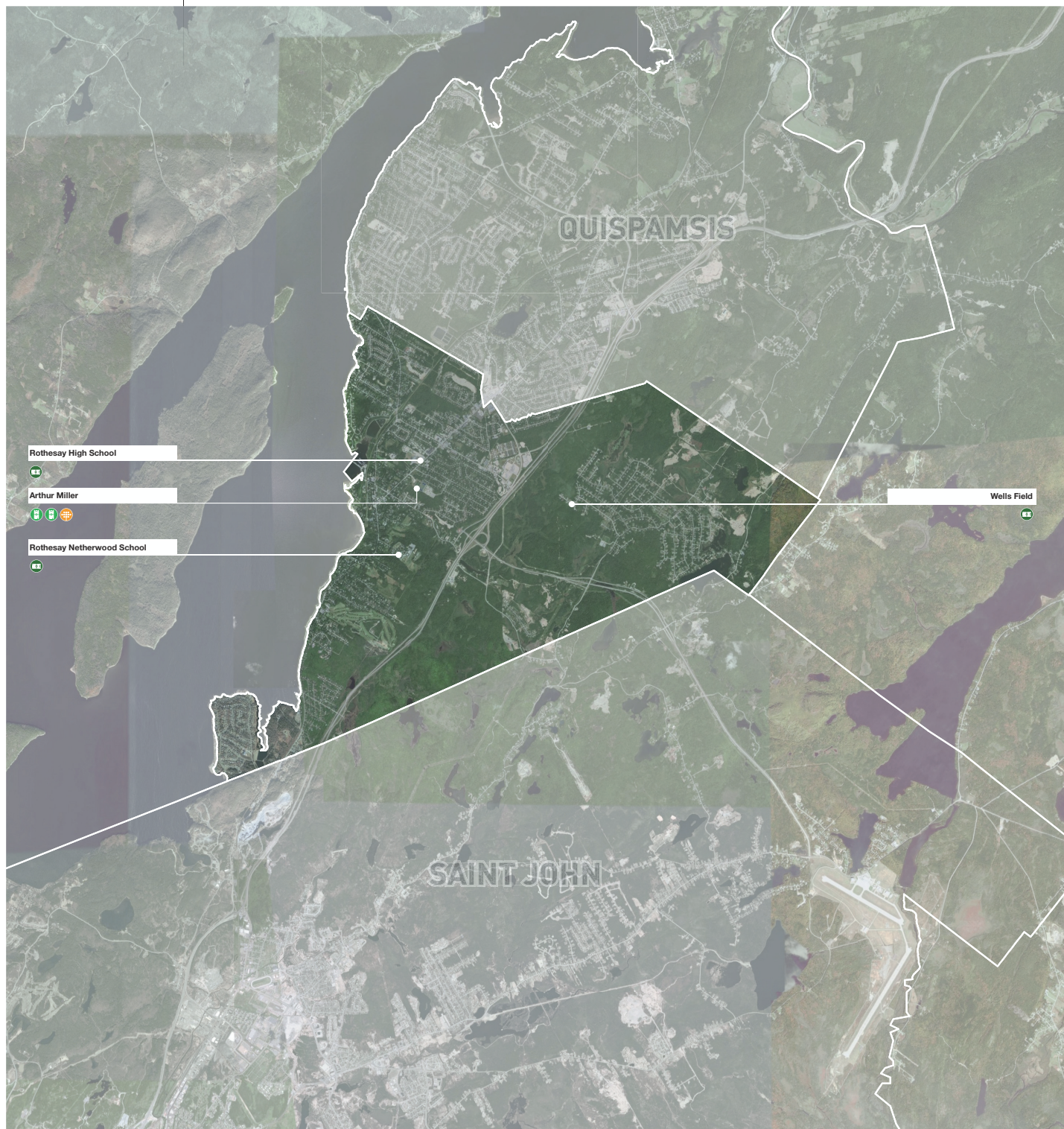
INTRODUCTION

BACKGROUND





CONSULTATION

RECOMMENDATIONS

APPENDICES



### LEGEND

-  BALL FIELD
-  GRASS SPORTS FIELD
-  TURF SPORTS FIELD
-  LIGHTING AVAILABLE

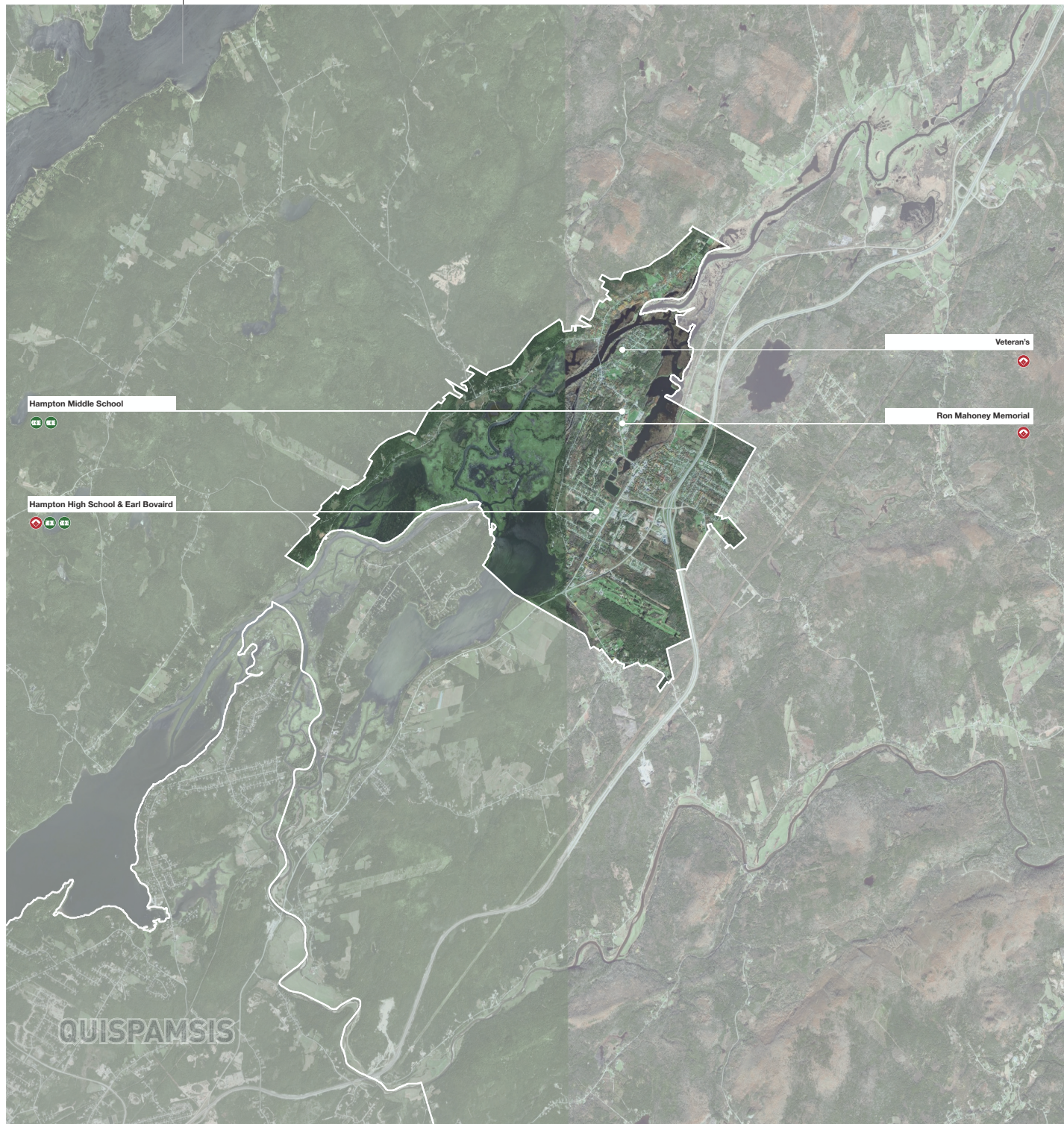




# 4

# HAMPTON

## SPORTS FIELDS



### LEGEND

- BALL FIELD
- GRASS SPORTS FIELD
- TURF SPORTS FIELD
- LIGHTING AVAILABLE





## Current Quispamsis Field Usage

The following chart highlights the 2015 scheduled usage for each of the Town fields.

There are available time slots for most of the fields. This indicates that the fields are not being used to the full potential and a restructured schedule would allow for increased play time for the various fields. Working with user groups to maximize the use of time

slots should be explored prior to the capital investment of constructing additional fields.

There are no time slots available after 7pm for three of the four ballfields, because they are not lit. Implementing lights at Meenan's Cove field also opens up a number of available time slots for both youth and adults.

KVMBA

FIELD	TIME	Sun	Mon	Tues	Wed	Thurs	Fri	Sat
Walter Jewett	10:00	-	-	-	-	-	-	MBA
	12:00	-	-	-	-	-	-	-
	14:00	-	-	-	-	-	-	-
	16:00	KVSA	-	-	-	-	-	-
	18:00	ORTH	GSB	QSLO	GPSLO	QSLO	SJCHURCH	-
	20:00	ORTH	GPSLO	QSLO	ORTH	QSLO	SJCHURCH	-
	22:00	ORTH	GPSLO	QSLO	ORTH	QSLO	-	-
Meenan's Cove	10:00	-	-	-	-	-	-	KVSA
	12:00	-	-	-	-	-	-	KVSA
	14:00	-	-	-	-	-	-	KVSA
	16:00	KVSA	-	-	-	-	-	KVSA
	18:00	KVSA	KVSA	QSLO	KVSA	QSLO	KVSA	-
Memorial	10:00	KVMBA	-	-	-	-	-	KVMBA
	12:00	KVMBA	-	-	-	-	-	KVMBA
	14:00	KVMBA	-	-	-	-	-	KVMBA
	16:00	KVMBA	-	-	-	-	-	KVMBA
	18:00	KVMBA	KVMBA	KVMBA	KVMBA	KVMBA	KVMBA	-
Centennial	10:00	KVMBA	-	-	-	-	-	KVSA
	12:00	KVMBA	-	-	-	-	-	KVSA
	14:00	KVMBA	-	-	-	-	-	KVSA
	16:00	KVSA	-	-	-	-	-	KVSA
	18:00	KVSA	KVMBA	KVMBA	KVMBA	KVSA	KVSA	-

Table 1. Quispamsis Ballfield Bookings, 2015

## Municipal Policy

### Quispamsis Municipal Development Plan (2007)

The town's 2007 plan explicitly states an interest to **“provide for the development of a variety of recreation facilities such as playgrounds, green spaces and sports fields”** (p. 26) and to **“prepare a recreation strategy”** (p. 27). Care should be taken to site facilities in a way that will “promote and enhance compact development” (p. 11). Also recommended are **“the use of school facilities such as gymnasiums, sports fields... for community activities...”** (p. 29).

### Play Saint John (2012)

This recreation plan for Saint John proposes an approach to addressing a significant oversupply of fields and facilities in the region, and investing in the quality of sports hubs. They also propose a Community Joint Use Agreement with schools and a centralized booking system for field time.

### Town of Hampton Recreation Master Plan (2009)

There is an adequate supply of fields in Hampton, but their quality is inadequate. Their scheduling process could also be improved.

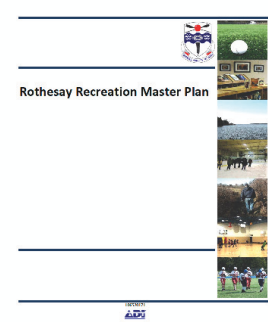
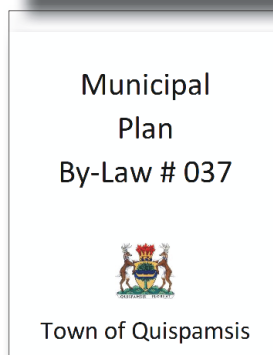
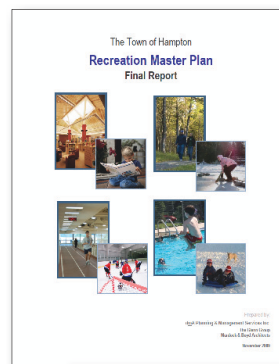
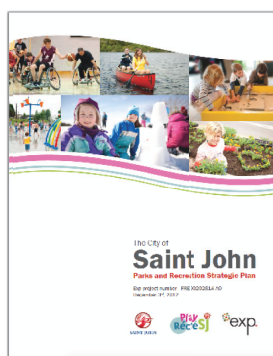
### Town of Rothesay Recreation Master Plan (2009)

Rothesay discusses the importance of balancing the needs of youths and seniors.

To be in line with community goals, and to learn from the experience of nearby communities, Quispamsis should:

#### LESSONS LEARNED

- **focus on quality, not quantity of recreation facilities, and rehabilitate existing fields when possible;**
- **provide a well-organized system for booking of field time, consider ‘youth first’ policy; and**
- **consider Joint Use Agreements with schools and regional partners**



# Facility Standards

## Field Provisions

Some communities recommend using population-based standards to determine how many fields are required. The Ontario Recreation Facilities Association publishes such standards, recommending:

- 1 field or diamond per 5,000 people.

These standards have been widely adopted by many municipalities throughout Canada.

Other communities (e.g Halifax Regional Municipality) recommend a participation-based standard. The number of fields or diamonds is determined by the number of participants (for all ages) in the sport. They

recommend different standards for each sport (Halifax, 2008, p. 26):

- 1:100 for soccer (fields),
- 1:100 for softball, fastball and baseball,(diamonds)
- 1:120 for football (fields), and
- 1:140 for ultimate, rugby and field lacrosse (fields).

These standards are general rules of thumb and do not take into account issues such as facility lighting, which can significantly impact the capacity of existing fields.

Many municipalities recognize that any use of standards must be grounded in a more holistic approach, through the use of master planning, in order to truly understand the context of the community in question.

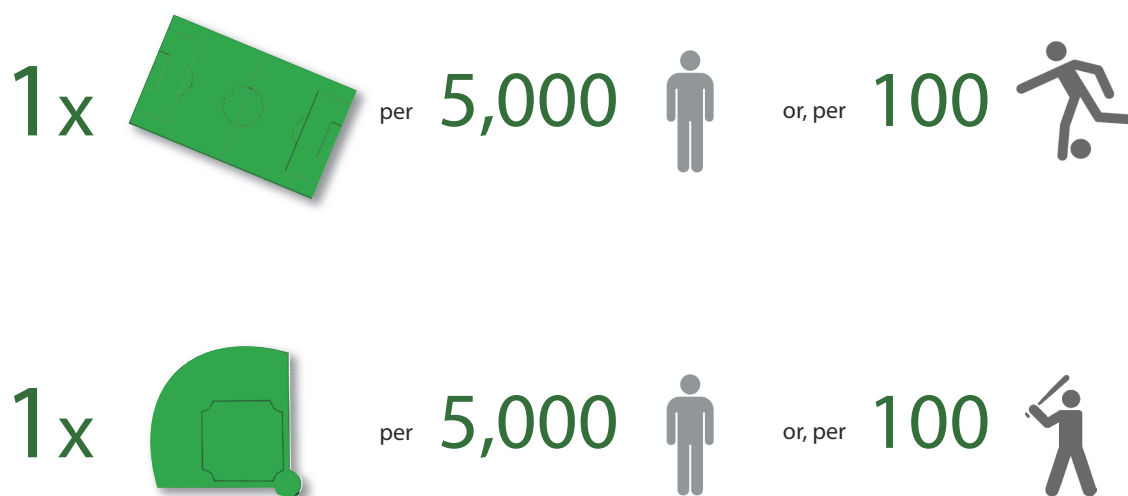


Figure 3. Image sources:

<http://site.unbeatableale.com/img213/mrshin1924.gif>

<http://www.clipartbest.com/cliparts/nTE/EAz/nTEEAzyTA.png>

[http://austinkleon.com/wp-content/uploads/2008/02/stick\\_figure.gif](http://austinkleon.com/wp-content/uploads/2008/02/stick_figure.gif)



Using the **population-based strategy**, for current and projected growth, as a guideline to determine the number of fields, Quispamsis should be providing the following:

19, 543 = 3.9 fields or diamonds (2015)

21, 167 = 4.2 fields or diamonds (2018)

25,000+= 5 fields or diamonds (2025)

**Quispamsis has 2 fields and 4 diamonds.**

**Based on a population-based strategy, Quispamsis has sufficient fields/diamonds to meet the needs of the community for potentially the next 10 years.**

Using the **participation-based strategy**, for current and projected growth, as a guideline to determine the number of fields, Quispamsis should be providing the following:

- **Soccer (2014) - 575 Quispamsis residents**
- **Softball, fastball, baseball (2014) - 708 Quispamsis residents**

575 = 5.7 fields (2014)

708 = 7.0 diamonds (2014)

*\* Based on Quispamsis resident participation numbers provided for 2014.*

**Quispamsis has 2 fields and 4 diamonds.**

**Based on a participation-based strategy, Quispamsis does not meet the target for fields or diamonds.**

Club	Catchment Area	Field Type	2012	2013	2014
Fundy Soccer	Greater Saint John and Kennebecasis Valley	Rectangular	NA	561	575
Kennebecasis Valley Minor Ball	Kennebecasis Valley	Diamond	267	267	247
Kennebecasis Valley Girls Softball	Kennebecasis Valley	Diamond	139	227	293
Quispamsis Slow Pitch	Quispamsis	Diamond	144	95	80
Gondola Point Slow Pitch	?	Diamond	34	NA	24
Kennebecasis Valley Orthodox Church	Kennebecasis Valley	Diamond?	33	32	39
SJ Church League	Greater Saint John?	Diamond?	37	NA	25
Fundy Lacrosse	Greater Saint John and Kennebecasis Valley	Rectangular			

Figure 4. Quispamsis resident participants for various sport organizations, 2012, 2013 and 2014.

# 3 Consultation

## Public Openhouse

The project mandate includes engaging the various sports field user groups and the public. The first community engagement was a public openhouse. The various user groups and organizations, along with the public were invited to Quispamsis Town Hall to provide initial input into the project at the initial stage. At the openhouse, the goal for the session was to listen and collect information. The consultant team members and Town staff were available for discussion. Maps of each of the Town fields were displayed, as were maps of field inventory for the communities of Saint John, Hampton and Rothesay. 'Idea Boards' were placed around the room for general comments pertaining to user needs. The openhouse had attendants from various sports organizations, approximately 15-20 people attended the session.

## Survey

A survey was prepared in order to provide another method for field users and the residents of Quispamsis to provide input for the project. A number of questions were posed to determine what the users feel is currently working well and where there is room for improvement. The survey also provided an understanding of what community

fields are being used for and where they feel there are deficiencies. Hardcopies of the survey were made available at the open house session and posted on the Town's website for community members to access.

Field user groups were emailed a copy of the survey for distribution to their memberships.

In total 26 surveys were received, 9 from the openhouse session and 17 online.

## User Group Contact

Field users groups and organizations were individually contacted by phone or email. Discussions with each of the user groups provided insight into the current issues pertaining to sports fields and the results have been summarized in this report.

(A list of stakeholders consulted is provided in the Appendices section.)

## Neighbouring Community Contact

Understanding the importance of regional connections and potential lessons learned, the neighbouring communities of Saint John, Hampton and Rothesay were each contacted.



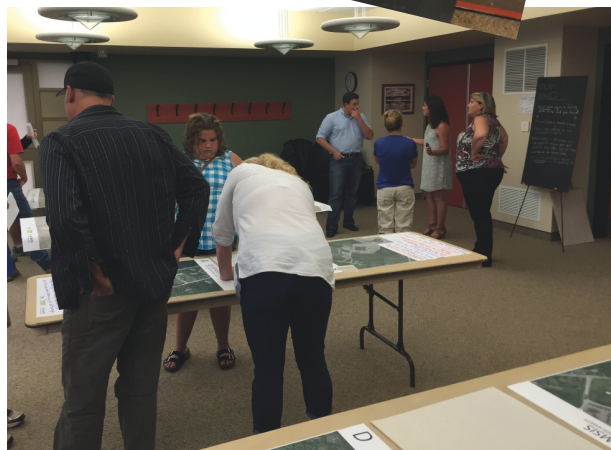
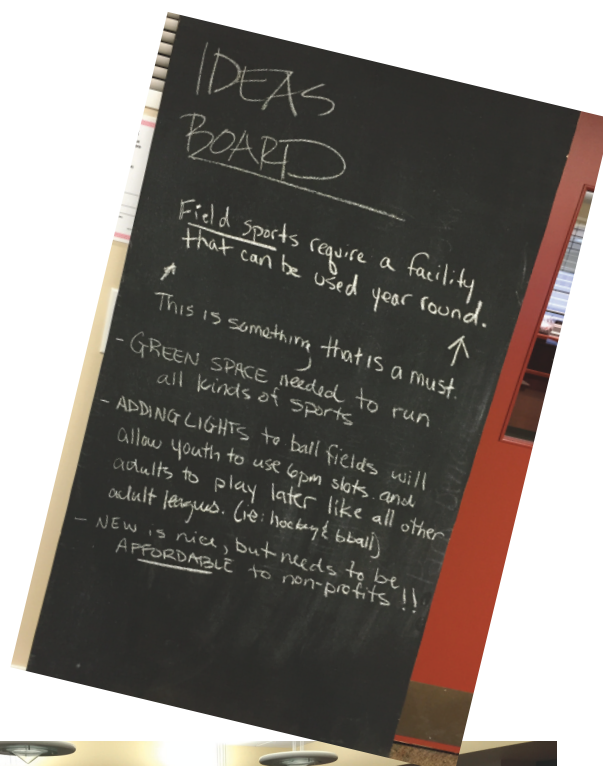
## What We Heard

Based on the consultation, a few major themes emerged in regards to sports field facilities. Participants expressed desire for:

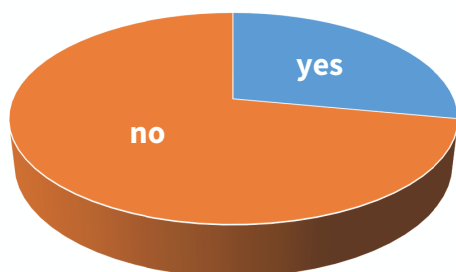
- more fields
- clustered fields
- amenities (washrooms, lights, practice amenities)
- general maintenance/repairs (grading, fencing, etc.)
- increased availability of time slots

The survey results have been summarized in a series of diagrams and charts. In addition to the questions posed many additional comments were provide which have been included within this report.

Following the survey summary, are maps for the various Town fields with site specific feedback collected during the consultation.



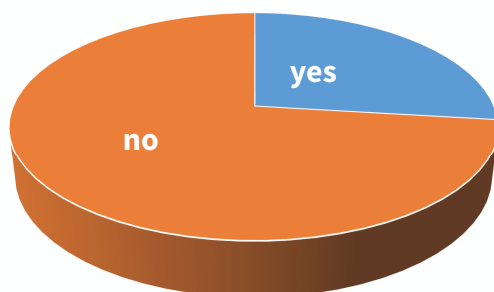
Do you feel the current sports fields in Quispamsis meet the needs of the community, are well maintained and that concerns are addressed in a timely manner?



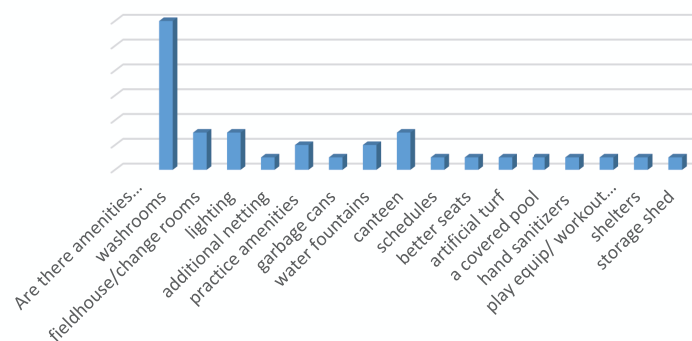
The additional comments provided by survey participants are as follows in decending order:

- need for more fields/more time slots/lights at more fields
- maintenance required
- consider fields well maintained and desire for year round facility
- need layout for all levels of play
- more site amenities needed

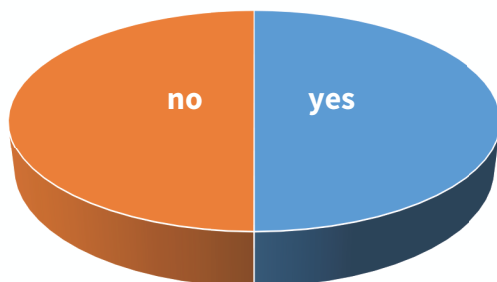
Do you feel there are adequate amenities at the Town Fields?



Are there amenities that you feel would add value to the existing Town fields?



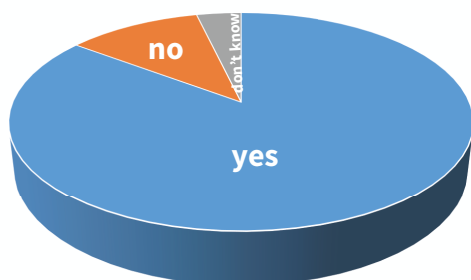
Do you experience difficulty reserving fields?



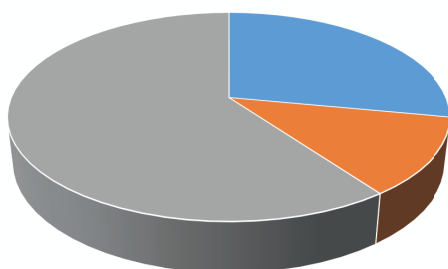
The additional comments provided by survey participants are as follows:

- field time allocations are last minute at the start of the season.
- not adequate, few available to get adequate practice times, limits expansion capabilities
- difficult to book extra pratice times
- required to use fields outside of Quispamsisstaff are accessible and responsive
- no exeperience or did not know there was a channel

Is notification of field closures disturbed in a timely manner and are the methods of notification satisfactory?



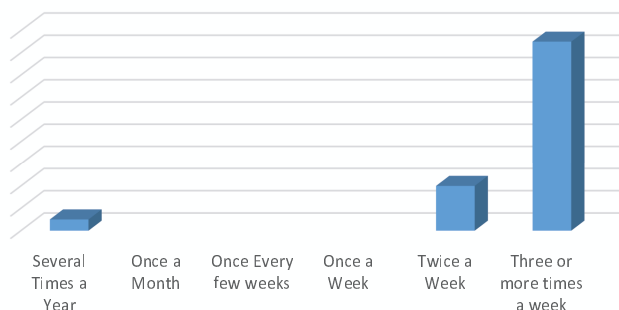
Is the current channel for reporting maintenance and usage concerns working? Do you feel that Town staff follow-up regarding concerns?



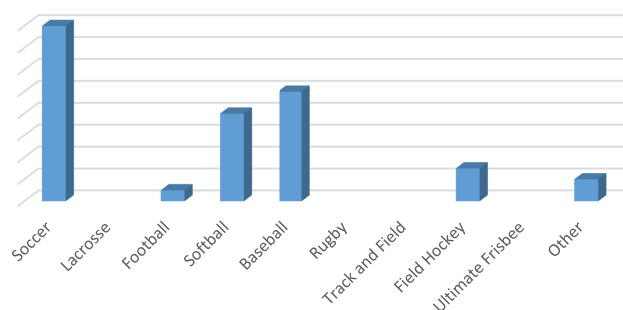
The additional comments provided by survey participants are as follows:

- after hours contact is difficult
- staff are accessible and responsive
- no experience or did not know there was a channel

How often do you or your family members use sports fields?

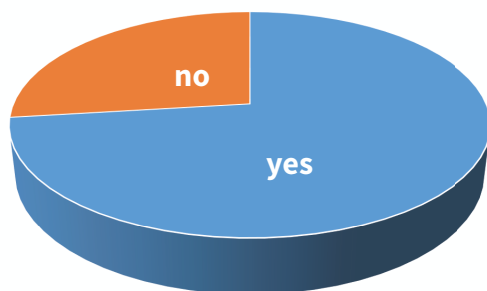


Which of the following sports do you participate in when using the Town fields?

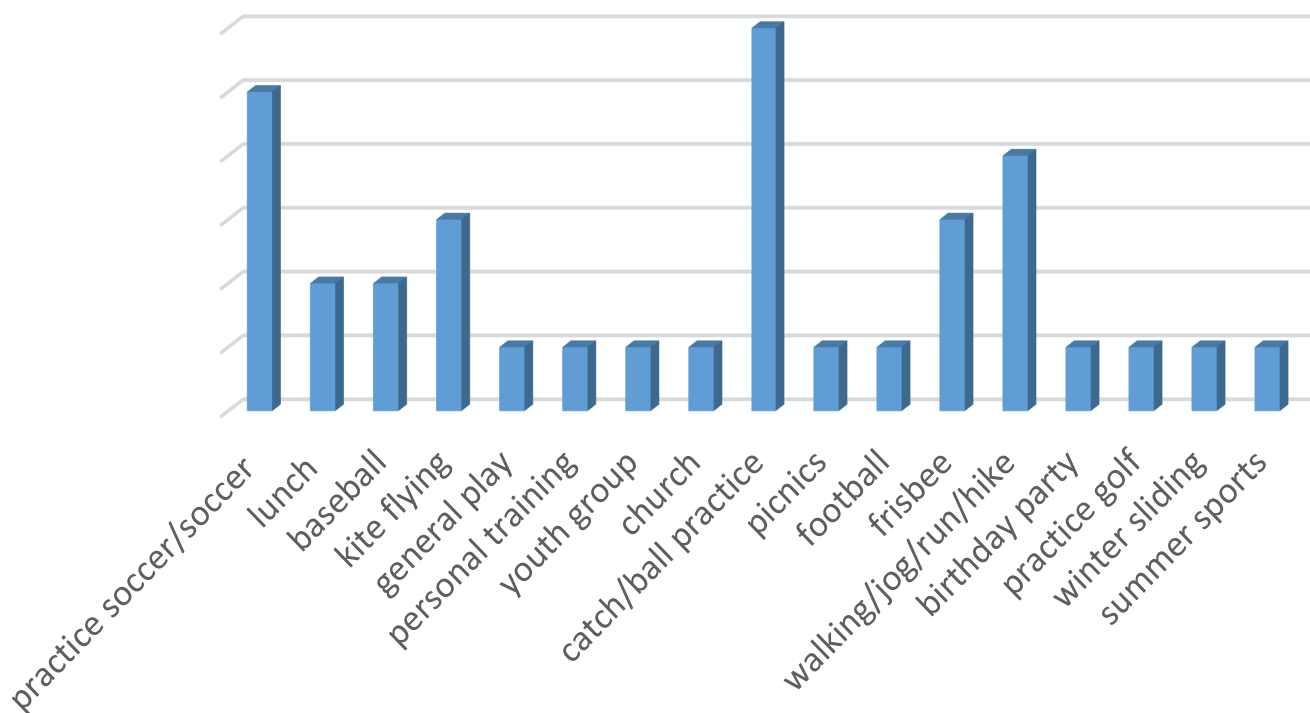
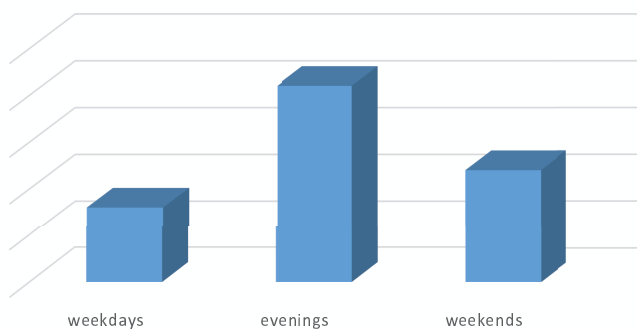




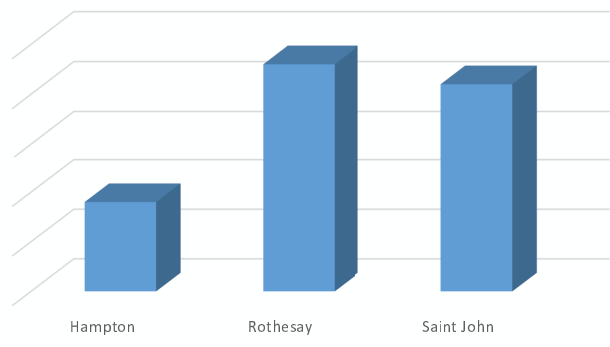
Do you or your family members use the sports fields for activities other than organized sports (e.g. catch, lunch)?



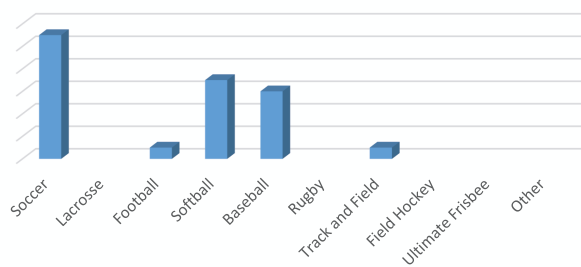
When do you typically use the neighbouring fields for sports related activities?



Do you use fields in neighbouring communities?



Which of the following sports do you participate in when using fields in neighbouring communities?



# A

## QUISPAMSIS

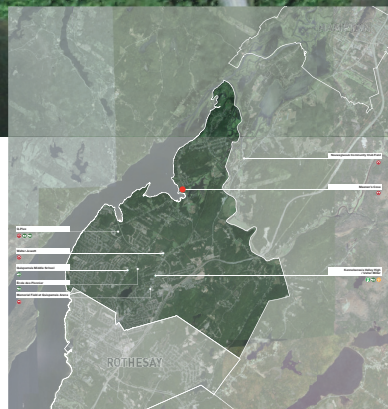
SPORTS FIELDS MEENAN'S COVE



### COMMENTS:

#### WHAT WE HEARD - MEENAN'S COVE

- lights on the ball field to create more slots for mens league so youth can use 6pm slots
- not the right field for the men's league
- balls being hit out of the field towards the parking - netting required and netting down first base line
- softball batting cages desired
- lack of warmup area
- better washrooms facilities or atleast full access to current ones at the beach house
- scoreboard desired
- add basketball court with both 8.5 and 10' rims (cross court/ tournaments)
- storage shed/equipment storage (base box) or facility to have a canteen/announcing, etc. for tournaments



### RECOMMENDATIONS

- Add netting/fencing where required.
- Encourage scheduling of adult leagues to use Walter Jewett/ consider lights
- Install a score board.
- Install a small storage area.
- Provide signage/access to washrooms.

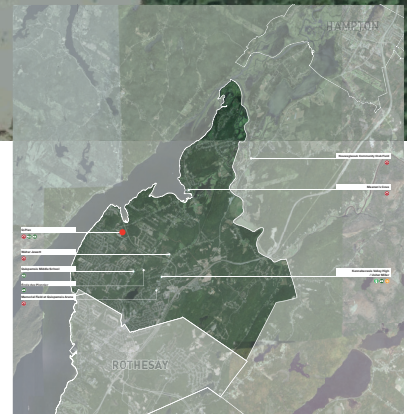




## COMMENTS:

### WHAT WE HEARD - RECREATION CENTRE

- washrooms/ changing areas (field house for changing)
- install netting on parking lot side of ball field
- consider dividing the soccer field into two small ball fields when not being used for soccer
- basketball court 18.5' and 10' nets
- add lights
- enlarge the smaller multi-purpose field
- maintenance - grass often too long/mown high, water and fertilize, fields often rock hard (infields) fields need to have better playing surfaces that allow sliding
- running track finished with asphalt/rubberized
- ballfield needs some ancillary land for additional utilities



## RECOMMENDATIONS

- **General field maintenance.**
- **Add fencing/netting where required.**
- **Provide signage to washrooms in park building.**
- **Allow ball to practice on soccer field when not in use.**
- **Install practice amenities.**





# QUISPAMISIS

SPORTS FIELDS WALTER JEWETT



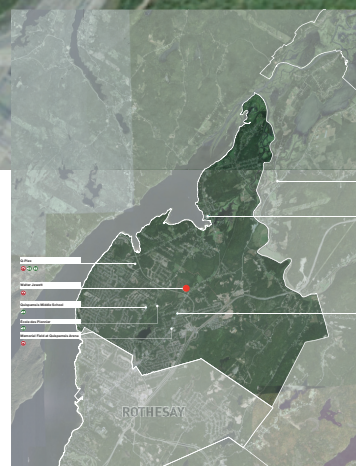
## RECOMMENDATIONS

- Repair score board
- Add netting where required
- Provide magnetic bags
- Install more permanent washroom/changeroom facilities.

## COMMENTS:

### WHAT WE HEARD - WALTER JEWETT

- best field for mens league
- Great field, could use permanent washroom facility and would love to get electronic scoreboard up and working again
- love this field
- magnetic bags at all distances
- net down first base line





## COMMENTS:

### WHAT WE HEARD - MEMORIAL FIELD

- pitching mound/batting box (clay mix)
- warm-up area - not available
- lights on the field would increase number of time slots
- Infield retains water
- base inserts would be helpful
- higher netting needed on 3rd base side

## RECOMMENDATIONS

- **Not recommended for lights based on size.**
- **Maintenance for better field drainage.**
- **Provide base inserts.**
- **Provide additional netting.**



# 4 Recommendations

## Policy Statement

It is recommended that a policy be adopted that will aid in the allocation of sport field time slots similar to policies developed in other municipalities for ice times and field times. The recommended policy would highlight a 'youth first' approach that allocates field times be designated until 8pm for youth sport organizations.

## Quality First

A focus should be placed on providing high quality sports fields before increasing the quantity of recreation facilities. Rehabilitation, restoration and repairs should be implemented for existing fields before construction of new fields within the community. Where possible site amenities and practice amenities should be implemented on existing fields prior to addition of new fields.

There are alternate avenues for increasing playability of existing fields, opportunities for shared facilities and regional agreements that require less capital investment than new infrastructure. These options should be explored prior to the construction of new fields.

## Booking System

While the actual booking of fields does not appear to be problematic based on community input, a more accessible organized system is recommended.

## Recreation Master Plan

The recommendations of this report are in relation to the sports fields only. It is recommended that the Town of Quispamsis engage consultant services to develop a complete recreation master plan for the community of Quispamsis.

## Joint Use Agreements

The Town of Quispamsis does not currently maintain or schedule provincial school owned fields or privately owned fields. It is recommended that opportunities be explored between the school districts and the municipality for shared use of existing and/or future fields before investing in new capital projects for sports fields.

## Regional Cooperation

The municipalities of Saint John, Rothesay and Hampton feature a number of fields that might be able to accommodate users who currently feel underserved in Quispamsis. Regional cooperation and integration of recreational master planning activities between the municipalities could save all participating municipalities capital costs for new facilities.

Discussions with regional communities should also

be explored as an opportunity for more shared use of existing recreational amenities.

## Efficiency and Flexibility

All future sports field complexes should be designed for efficiency and flexibility in order to attract emerging sports, both organized and casual. This includes the development of ‘hubs’ or clustered fields that accommodate tournaments and multiple group events as well as sport tourism opportunities. All fields should be designed to allow for the hosting of national and international events.

## Implementation Strategy

The following implementation is a five year phased strategy that outlined a series of proposed tasks for each year.

### Year 1 -

- 1) Develop ‘Youth First’ Policy Statement
- 2) Commission a Community Recreation Master Plan
- 3) Explore Joint Agreements for use of school fields
- 4) Initiate Regional Discussion (Fundy Service District)
- 5) Address maintenance issues/renovations/restoration of existing fields *(See individual fields recommendations in previous section for recommendations)*
- 6) Add lights at Meenan’s Cove Field
- 7) Re-assign time slots accordingly (youth first policy and lights added)

### Year 2 -

- 1) Ball Field #1 (200’ centre) Hampton Road Site
- 2) Site Access and Parking
- 3) Potential Restoration of School Fields
- 4) Ongoing regional discussions.

### Year 3 -

- 1) Park Building at Hampton Road Site (washrooms, canteen, storage)
- 2) Potential Restoration of School Fields

### Year 4 -

- 1) Ball field #2 (200’ centre) Hampton Road Site
- 2) Potential Restoration of School Fields

### Year 5 -

- 1) Ball field #3 (200’ centre) Hampton Road Site

*Note- should an agreement be made between the municipality and the schools, cost estimates should be prepared for each field identifying potential renovations as priority projects.*







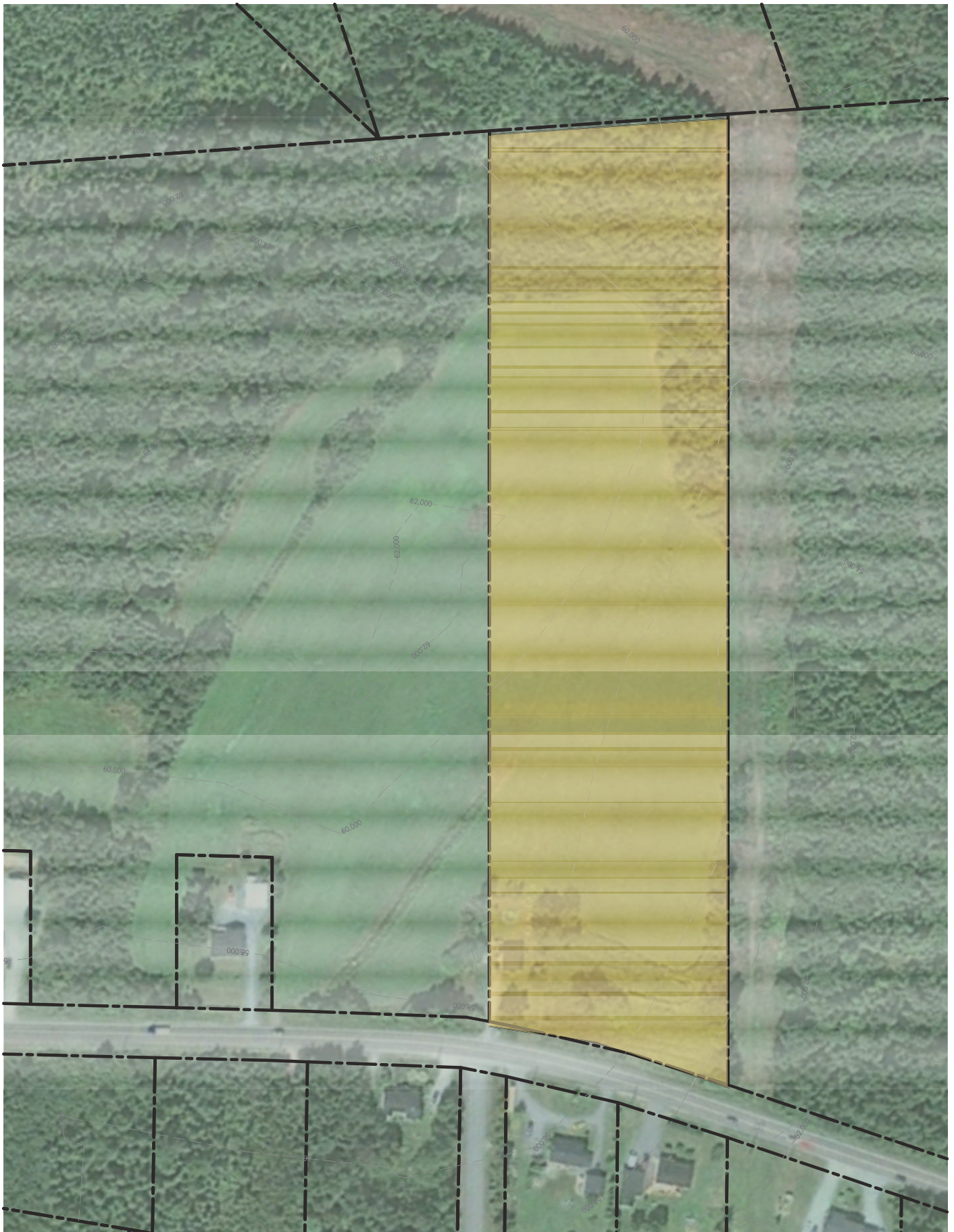
## Summary

Based on the more conservative participation-based strategy (as opposed to a population-based strategy), Quispamsis requires both ball diamonds and sports fields to meet the current participation needs. There are however, 3 schools with sports fields that could potentially accommodate soccer activities if joint use agreements were pursued. Many junior soccer activities also include dividing large fields into a number of smaller fields, which decreases the need for full fields.

Given that there are existing fields within Quispamsis, it is not recommended to build new infrastructure before exploring joint agreements for use of privately owned fields. The capital investment of building new fields surpasses the potential field upgrades and time towards the exploration of joint agreement investigations. In addition to the potential for use of school fields, consideration should be given to a regional recreation plan between the various communities.

Based on the existing inventory and private inventory it is the recommendation of this report to develop the Hampton Road site in phases in concert with renovations of existing fields. This recommendation should be reviewed with each municipal plan review period and confirmed as part of the proposed recreation master plan.

Two concepts for Hampton Road have been explored as a means to identify the opportunities and constraints that would accompany either soccer fields or ball fields on the Hampton Road Site.





# Hampton Road Site

## The Site

The Hampton Road property is a long and narrow piece of land (approximate dimensions 95m wide x 365m long). The site has a fair bit of topography. Accessing the property from Hampton Road is steep before leveling out. The rolling terrain has a lower area in the middle of the site and for the most part is open field.

## Opportunities

- Can accommodate 2 full size soccer fields with site amenities such as a park building (washroom/canteen, parking).
- Can accommodate 3 ball diamonds (200' centre) with site amenities such as a park building (washroom/canteen, parking, batting cages).

## Constraints

- The site is narrow for accommodating sports fields with the existing topography and will require retaining measures.
- Restricted to smaller fields for ball, due to property configuration and required grading.
- Difficult to have a central site amenity space with ball diamond scenario due to linear configuration.
- Site location is not central to the Town's core.
- All new infrastructure will be required (parking, lighting, washrooms, etc.)

# Hampton Road Site Ball Diamond Concept











# APPENICIES

# Consultation Data

## Public Openhouse

- *Town of Hampton*

Public Openhouse Session - July 15, 2015.

## Stakeholder Comments

## Survey

## Fundy Soccer

Survey available to the public at openhouse, on the Town website and emailed to organizations. (Attached as part of this section)

- Not enough fields for soccer, 2 fields in Quispamsis

- 1200 kids enrolled in the program, waiting list

## Stakeholder Contacts

- 5 fields dedicated to house /recreational league

The following list of organizations and individuals were contacted during the consultation stage of the project by either phone or email.

- Qplex fields well maintained

- Lights would allow for older members/adults to play later and provide for more time slots for kids

- *Fundy Soccer*

- If there were 2 more fields they would be full

- *Gondola Point Slow Pitch*

- Suggestion to build a complex with soccer fields on the new property and renovate the existing fields to ball fields

- *KVGSB*

## Gondola Point Slow Pitch

- *KV Girls Softball*

- A shame that the ball fields are only used during the daylight, only 1 field with lights.

- *KV Minor Ball*

- Add lights.

- *KV Minor Ball*

- They are a timeslot short, have used other fields, going elsewhere.

- *Saint John Church League*

- *Saint John Ultimate Frisbee*

## Municipal Contacts from Neighbouring Communities

- Meean's Cove, 5 daytime only but would have 15 time slots with lights.

- *Town of Rothesay*

- They have held back expansion to league because of the slots available within the Town.

- *City of Saint John*



## KVGSB

- Opportunity for more softball
- Growing rapidly, had to turn away kids because there are not enough available time slots. Fastest growing league and largest in NB.
- Sourcing to Rothesay Netherwood for fields
- Young kids don't get on the actual ball field
- Play Sunday, Monday, Tuesday, Wednesday, Thursday
- Hard time to have weekend times (parents, people away in the summer)
- Ages 4-18, majority under 10 (200+)
- Lights at the field would push the time slots
- Walter Jewett a good field but needs updates
- Currently have youngest players on the soccer field (up to 60 kids on the field).
- User group identified weekend not desirable
- At the max with 400+ kids at the moment

## KV Minor Ball

- Time slots an issue due to the majority of kids age (200 kids 8-13)
- Greenspace can be used for little kids, ideally a field but greenspace can work. Teaching

and practicing can happen around the periphery

- Dedicated fields in other communities for ball
- Parent comments that it would be nice to have clustered fields with facilities (washrooms, canteen, batting cages, parking, etc.)
- Memorial Field fits well for the 10-13 age group and the size works well for the two biggest groups
- Would be renting more surrounding fields if available
- New fields are a must
- Batting cages and other amenities at the field allow for more productive practices, not always needing a field
- Soccer field divided into 2 ball fields works for younger kids
- Strategically growing their league, availability of field times one of the main reasons
- Hard to get to the field for 5:30, dual income families, kids can't play late
- Concern – more field times
- They are trying some weekday programs as optional for those that can make it
- Walter Jewett is not heavily used for softball

- If lights, more practices could be pushed a little later
- They rented a field in Saint John at the beginning of the season because they couldn't use Quispamsis or Rothesay
- With an indoor field they might host tournaments.
- They play all year.
- They are a mixed gender sport.

• The fields don't drain well in some cases.

- Need amenities (batting cages, washrooms, canteen, etc.)

Saint John Church League

- Typically accommodated, no complaints
- Standard batter box (majority slow pitch back line)
- At Walter Jewett field they are hitting balls out the park

Saint John Ultimate Frisbee

- They have rented artificial turf fields from KVHS.
- Artificial fields are more desirable and they can play later in the season.
- Lights are a positive.
- They can play 2 games on a full size soccer field.
- Would be interested in booking a field house if that was ever in the cards.
- Would like to play later in the season on fields but fields are closed.

# References

Statistics Canada. 2012. Focus on Geography Series, 2011 Census. Ottawa, Ontario. Analytical products, 2011 Census. Last updated October 24, 2012.

Sporting, Recreational, and Fitness Needs Study, prepared for the Town of Quispamsis, prepared by Corporate Research Associates Inc., May 2007

Town of Quispamsis Community Consultation Final

Report, December 23, 2013.

KVMBA - Strategic Plan, January 28, 2015

**UPDATE**

# Survey

The survey that was made available to the community is attached on the following pages.





## Quispamsis Sports Fields

The Town of Quispamsis is working with a consultant team to complete a Sports Field Analysis. This analysis will be used to develop recommendations and an implementation strategy for existing and future sports fields within the community of Quispamsis. The Town wants your input, please share your ideas.

1. Do you or your family members use the fields?

☐

Yes

☐

No

If 'yes' how many members in your household use the fields? \_\_\_\_\_

In what area do you reside (postal code)? \_\_\_\_\_

2. Do you feel the current sports fields in Quispamsis meet the needs of the community, are well maintained and that concerns are addressed in a timely manner?

☐

Yes

☐

No

☐

I don't know

If you have answered 'no' please indicate reason(s) \_\_\_\_\_

---



---

3. Is the current channel for reporting maintenance and usage concerns working? Do you feel that Town staff follow-up regarding concerns?

☐

Yes

☐

No

☐

I don't know

If you have answered 'no' please indicate reason(s) \_\_\_\_\_

---



---



---



4. Is notification of field closures disturbed in a timely manner and are the methods of notification satisfactory?

☐ Yes

☐ No

☐ I don't know

If you have answered 'no' please indicate reason(s) \_\_\_\_\_

---

---

---

5. Do you or your family members use the sports fields for activities other than organized sports (e.g. catch, lunch)?

☐ Yes

☐ No

Specify activity \_\_\_\_\_

6. How often do you or your family members use sports fields?

- ☐ Several times a year  
☐ Once a month  
☐ Once every few weeks  
☐ Once a week  
☐ Twice a week  
☐ Three or more times a week

7. How long does it take you to get to the sports fields that you use?

- ☐ More than 45 minutes  
☐ 30-45 minutes  
☐ 20-30 minutes  
☐ 15-20 minutes  
☐ 10-15 minutes  
☐ < 10 minutes



8. What mode of transportation do you use to travel to the sports fields?

- ☐ Car with 2 or fewer people
- ☐ Car with 3 or more people
- ☐ Public transportation
- ☐ Bicycle
- ☐ Walk
- ☐ Other, please specify \_\_\_\_\_

9. Which of the following sports do you participate in when using the Town fields? Check all that apply.

- ☐ Soccer
- ☐ Lacrosse
- ☐ Football
- ☐ Softball
- ☐ Baseball
- ☐ Rugby
- ☐ Track & Field
- ☐ Field Hockey
- ☐ Ultimate Frisbee
- ☐ Other, please specify \_\_\_\_\_

10. Do you use fields in neighbouring communities? Check all those that apply.

- |                             |                              |                             |
|-----------------------------|------------------------------|-----------------------------|
| Hampton                     | <input type="checkbox"/> Yes | <input type="checkbox"/> No |
| Rothsay                     | <input type="checkbox"/> Yes | <input type="checkbox"/> No |
| Saint John                  | <input type="checkbox"/> Yes | <input type="checkbox"/> No |
| Other, please specify _____ |                              |                             |

11. If 'yes' to the previous question, which of the following sports do you participate in when using fields in neighbouring communities? Check all that apply.

- ☐ Soccer
- ☐ Lacrosse
- ☐ Football
- ☐ Softball
- ☐ Baseball
- ☐ Rugby
- ☐ Track & Field
- ☐ Field Hockey
- ☐ Ultimate Frisbee
- ☐ Other \_\_\_\_\_





12. When do you typically use the neighbouring fields for sports related activities:

- ☐ weekdays  
☐ evenings  
☐ weekends

13. Do you feel there are adequate amenities at the Town Fields?

☐ Yes☐ No

14. Are there amenities that you feel would add value to the existing Town Fields?

---

---

**The following question is for Sports Organizations.**

15. Do you experience difficulty reserving fields?

☐ Yes☐ No

If you answered 'yes' please provide additional information. \_\_\_\_\_

---

---

---

---

16. Please provide any additional information related to sports fields within Quispamsis.

---

---

---

---

**Thank you contributing your input to this community project.**

# COST ESTIMATES

## Implementation Strategy Cost Estimate

The following cost estimate is based on preliminary concept development and previous quotes obtained by the Town.

***Note- should an agreement be made between the municipality and the schools, a cost estimate should be prepared to potentially renovate these fields and moved into year 2 and 3 as priority projects.***

### **Year 1 - Estimated Investment \$250,000**

Develop Policy Statement	no capital cost
Recreation Master Plan Engagement	\$50,000
Explore Joint Agreements for use of school fields	no capital cost
Initiate Regional Discussion (Fundy Service District)	no capital cost
Address maintenance issues/renovations/restoration of existing fields (See individual fields recommendations on previous section for recommendations)	* \$30,000 (2015-2016 operating budgets)
Lights at Meenan's Cove Field (including small electrical building)	\$200,000
Re-assign time slots accordingly (youth first policy and lights added)	no capital cost

## Year 2 - Estimated Investment \$500,000 (plus potential for school field)

Ball Field #1 , 200' centre \$400,000

*retaining, grading, fill, drainage, fencing, batting cages, bleachers, trail access*

Parking and Site Access (approx. 90 cars) \$100,000

Potential restoration of school fields to be determined

## Year 3 - Estimated Investment \$150,000 (plus potential for school field)

Park Building (washrooms, storage, canteen) \$150,000

Potential restoration of school fields to be determined

## Year 4 - Estimated Investment \$400,000

Ball Field #2 \$400,000

*retaining, grading, fill, drainage, fencing, batting cages, bleachers, trail access*

## Year 5 - Estimated Investment \$400,000

Ball Field #3 \$400,000

*retaining, grading, fill, drainage, fencing, batting cages, bleachers, trail access*





